

SGX Market Insight

- Market Commentary
- Market Statistics
- Economic Calendar
- Index Analysis
- Daily Stock Signal

Head Office - India

Address: 411 Milinda Manor (Suites 409-425)
2 RNT Marg. Opp Central Mall
Indore (M.P.)

+91 -731- 6642300

Info@epicresearch.co

United States

HNI& NRI Sales Contact
Arbor Vista Dr. Charlotte (NC)

+1 704 249 23

Australia

HNI& NRI Sales Contact
Mintara Road, Tarneit,
Victoria, Post Code 3029

+61 422 063855

Singapore & Malaysia

+65-3158-1402
Info@epicresearch.sg

+60-3502-19047
Info@epicresearch.my

SINGAPORE MARKET INSIGHT

The Straits Times Index (STI) ended 15.9 points or 0.49% lower to 3225.95, taking the year-to-date performance to +11.98%. **For longer term observations please go to sgx.com/research.**

The top active stocks today were DBS, which declined 0.59%, Singtel, which declined 0.81%, OCBC Bank, which declined 0.99%, ComfortDelGro, which declined 2.90% and UOB, with a 0.81% fall.

The FTSE ST Mid Cap Index declined 0.46%, while the FTSE ST Small Cap Index declined 0.49%.

The three most active Exchange Traded Funds (ETFs) by value today were:

IS MSCI India (-0.34%) SPDR Gold Shares (-0.57%) STI ETF (-0.61%)

The three most active Real Estate Investment Trusts (REITs) by value were:

Ascendas REIT (-0.74%) CapitaLand Mall Trust (+0.48%) CapitaLand Commercial Trust (unchanged)

The most active index warrants by value today were:

HSI27400MBePW171030 (+9.89%) HSI28200MBeCW170928 (-27.27%) HSI28600MBeCW171030 (-6.60%)

The most active stock warrants by value today were:

DBS MB eCW180226 (-3.92%) UOB MB eCW180115 (-8.96%) SingtelMBeCW180129 (-6.90%)

TOP 5 Stocks by Trading Value

Counter Name	Code	Last	Change
▼ DBS	D05	20.370	-0.120
▼ SingTel	Z74	3.680	-0.030
▼ OCBC Bank	O39	11.000	-0.110
▼ ComfortDelGro	C52	2.010	-0.060
▼ UOB	U11	23.150	-0.190

TOP 5 Gainers

Counter Name	Code	Last	Change
▲ JSH USD	J37	46.380	+0.490
▲ Great Eastern	G07	25.890	+0.290
▲ IPC Corp	AZA	0.525	+0.150
▲ Haw Par	H02	12.020	+0.080
▲ Yanlord Land	Z25	1.630	+0.070

TOP 5 Losers

Counter Name	Code	Last	Change
▼ JMH USD	J36	65.670	-0.520
▼ Shangri-La HKD	S07	14.580	-0.360
▼ Venture	V03	17.080	-0.340
▼ Jardine C&C	C07	39.170	-0.330
▼ UOB	U11	23.150	-0.190

TOP 5 By Volume

Counter Name	Code	Last	Change
▲ Rowsley	A50	0.134	+0.007
▲ ASTI^	575	0.080	+0.028
Blumont	A33	0.001	-
▲ QT Vascular	510	0.008	+0.001
Advanced System	5TY	0.001	-

TOP 5 REITS GAINERS

Counter Name	Code	Last	Change
▲ AIMSAMP Cap Reit	O5RU	1.435	+0.020
▲ BHG Retail Reit	BMGU	0.740	+0.020
▲ CapitaMall Trust	C38U	2.090	+0.010
▲ Keppel DC Reit	AJBU	1.330	+0.010
▲ CapitaR China Tr	AU8U	1.635	+0.005

TOP 5 REITS LOSERS

Counter Name	Code	Last	Change
▼ Fortune Reit HKD	F25U	9.200	-0.050
▼ Mapletree Log Tr	M44U	1.205	-0.025
▼ SoilbuildBizReit	SV3U	0.700	-0.025
▼ Ascendas Reit	A17U	2.700	-0.020
▼ Frasers Cpt Tr	J69U	2.130	-0.020

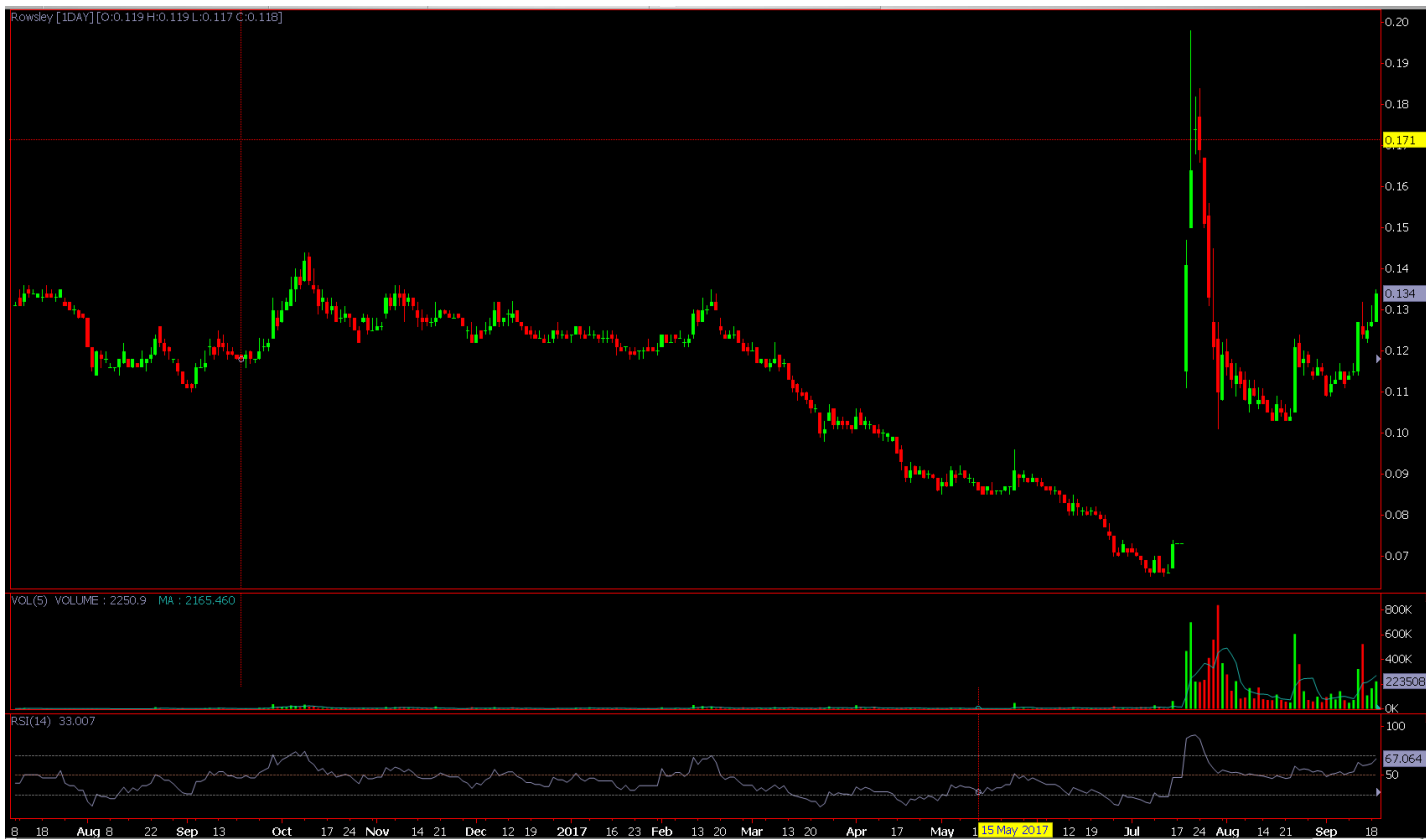
TOP 5 REITS TRADED BY VALUE

Counter Name	Code	Last	Change
▼ Ascendas Reit	A17U	2.700	-0.020
▲ CapitaMall Trust	C38U	2.090	+0.010
CapitaCom Trust	C61U	1.710	-
▼ Mapletree Com Tr	N2IU	1.530	-0.005
▲ Suntec Reit	T82U	1.880	+0.005

MAJOR ECONOMIC EVENTS

Time	Cur.	Event	Forecast	Previous
Monday, September 18, 2017				
All Day		Japan - Respect for the Aged Day		
05:00	EUR	CPI (YoY) (Aug)	1.5%	1.5%
Tuesday, September 19, 2017				
05:00	EUR	German ZEW Economic Sentiment (Sep)	12.5	10.0
08:30	USD	Building Permits (Aug)	1.220M	1.230M
Wednesday, September 20, 2017				
04:30	GBP	Retail Sales (MoM) (Aug)	0.2%	0.3%
10:00	USD	Existing Home Sales (Aug)	5.45M	5.44M
10:30	USD	Crude Oil Inventories		5.888M
14:00	USD	Fed Interest Rate Decision		
18:45	NZD	GDP (QoQ) (Q2)		0.5%
Thursday, September 21, 2017				
08:30	USD	Philadelphia Fed Manufacturing Index (Sep)	17.2	18.9
Friday, September 22, 2017				
All Day		Malaysia - Muharram		
03:30	EUR	German Manufacturing PMI (Sep)	59.0	59.3
08:30	CAD	Core CPI (MoM) (Aug)		-0.1%
08:30	CAD	Core Retail Sales (MoM) (Jul)	0.4%	0.7%
Saturday, September 23, 2017				
All Day		Japan - Autumn Equinox		

ROWSLEY LTD.



BUY ROWSLEY ABOVE 0.135 TARGET 0.142 0.148 SL 0.130

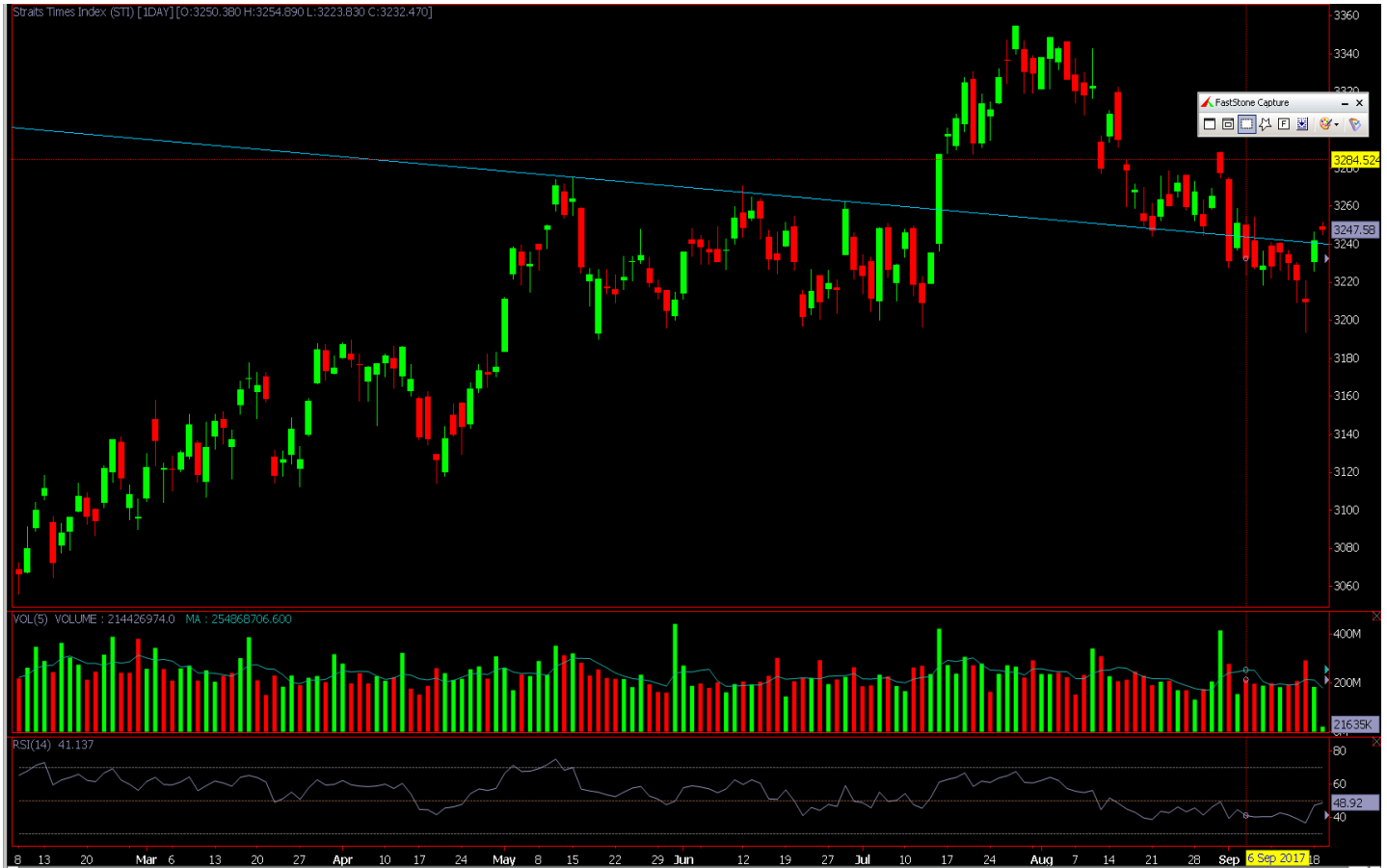
INTRADAY OUTLOOK:

SUPPORT- 0.135 RESISTANCE- 0.142

MARKET STRATEGY- LONG

RELATIVE STRENGTH INDEX(RSI) - 67.064

Straits Times Index



Straits Times Index Dropped -15.900 points or -0.49 percent at 3225.950 last trading session. The Straits Times Index came off from its intraday peak of 3246.490 and low 3220.560 . The RSI at 48.92

Head Office - India

Address: 411 Milinda Manor (Suites 409-425)
2 RNT Marg. Opp Central Mall
Indore (M.P.)

+91 -731- 6642300

Info@epicresearch.co

United States

HNI& NRI Sales Contact
Arbor Vista Dr. Charlotte (NC)

+1 704 249 23

Australia

HNI& NRI Sales Contact
Mintara Road, Tarneit,
Victoria, Post Code 3029

+61 422 063855

Singapore & Malaysia

+65-3158-1402
Info@epicresearch.sg

+60-3502-19047
Info@epicresearch.my

DISCLAIMER

The information and views in this report, our website & all the service we provide are believed to be reliable, but we do not accept any responsibility (or liability) for errors of fact or opinion. Users have the right to choose the product/s that suits them the most.

Sincere efforts have been made to present the right investment perspective. The information contained herein is based on analysis and up on sources that we consider reliable. This material is for personal information and based upon it & takes no responsibility

The information given herein should be treated as only factor, while making investment decision. The report does not provide individually tailor-made investment advice. Epic research recommends that investors independently evaluate particular investments and strategies, and encourages investors to seek the advice of a financial adviser. Epic research shall not be responsible for any transaction conducted based on the information given in this report, which is in violation of rules and regulations .

The share price projections shown are not necessarily indicative of future price performance. The information herein, together with all estimates and forecasts, can change without notice. Analyst or any person related to epic research might be holding positions in the stocks recommended. It is understood that anyone who is browsing through the site has done so at his free will and does not read any views expressed as a recommendation for which either the site or its owners or anyone can be held responsible for . Any surfing and reading of the information is the acceptance of this disclaimer. All Rights Reserved. Investment in equity & bullion market has its own risks.

We, however, do not vouch for the accuracy or the completeness thereof. we are not responsible for any loss incurred whatsoever for any financial profits or loss which may arise from the recommendations above epic research does not purport to be an invitation or an offer to buy or sell any financial instrument. Our Clients (Paid Or Unpaid), Any third party or anyone else have no rights to forward or share our calls or SMS or Report or Any Information Provided by us to/with anyone which is received directly or indirectly by them. If found so then Serious Legal Actions can be taken.